

Retail Parcel Locker

Technical Datasheet



The locker is customisable with a set-up of two modules where compartment sizes are based on retailers request. It is delivered in a neutral grey colour but can be customised to fit your profile. The “plug and play” design only requires one day on-site installation.



Example of how the locker can be customised and built-in.

Specifications

Key Features

- Safe and secure
- Easy deployment
- Ease-of-use
- Real-time of your package
- Reliable and easily integrated with other servers/ websites

Operating

- Operating Temperature: -20°C ~ 40°C Ambient Temperature
- Working Voltage: 110V~240V AC, 50Hz/60Hz
- Relative Humidity 10% min, 95% max, non-condensing

Hardware

- Industrial PC (Windows OS)
- 15" Touchscreen
- 2D barcode scanner
- 4G router and switch
- Stainless steel keyboard
- Electronic lock
- Door control board
- USB Camera
- Stuff IR sensor

Structure

Material

Galvanized steel for indoor and Cold rolled steel for outdoor

Thickness

1.0mm for locker frame and 1.5mm for locker doors

Surface treatment

Powder coating for indoor and E-coating + powder coating for outdoor

Weight

Starter Module 220 kg
Adder Module 180 kg.

Flexible Compartment Size

Examples:

Small compartment

95x365x480 mm (HWD)

Middle compartment

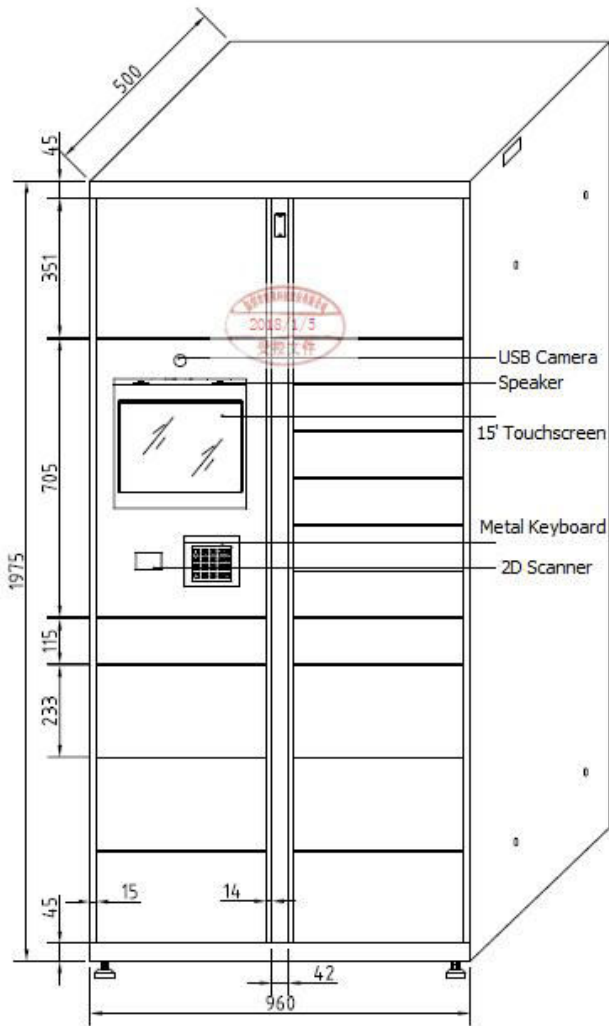
215x365x480 mm (HWD)

Large compartment

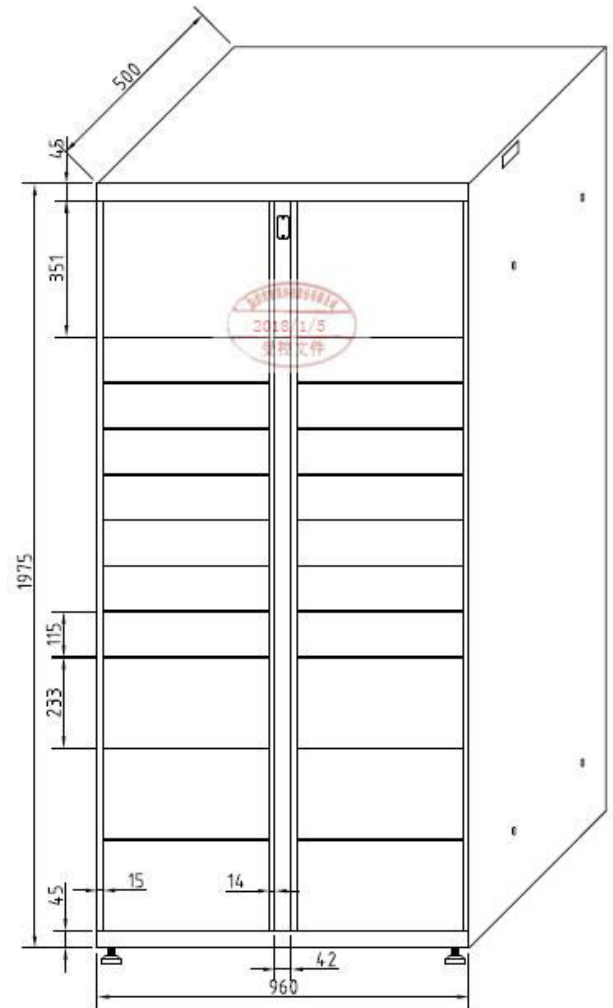
330x365x480 mm (HWD)

Outline dimensions

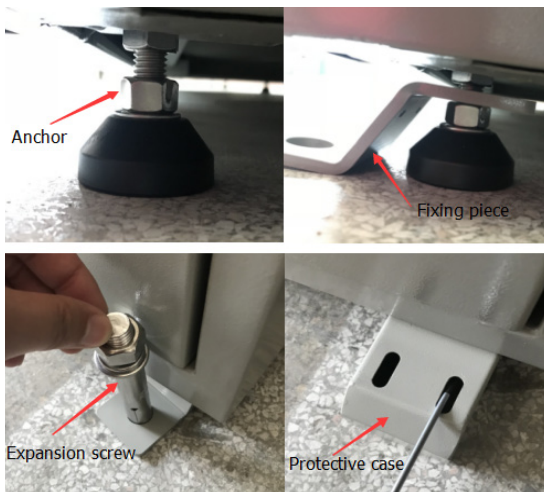
Starter Module



Adder Module



Flexible ground fixing



Rain Proof

