

# SOLUTIONS DESIGNED FOR THE EVOLVING DISTRIBUTION CENTER



# ACCURATE AND ON-TIME FULFILLMENT – THE FIRST TIME, EVERY TIME

With the growth of e-commerce along with rising consumer expectations for same-day delivery, today's distribution centers are under heightened pressure to speed order fulfillment and optimize their operations. How are today's smartest DCs doing this? With Honeywell. Honeywell has the breath of innovative, connected products and workflow solutions that enhance workplace safety and productivity and improve enterprise performance. With Honeywell, you'll have a workforce that's faster, more accurate, empowered, and more flexible to meet changing demands – boosting DC performance.

## BOOSTING DC WORKER PRODUCTIVITY IN THE NEXT GENERATION DISTRIBUTION CENTER

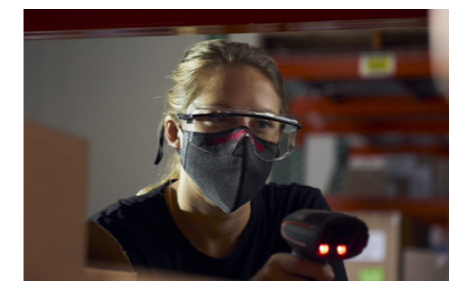
Honeywell's passion for productivity improvements drives our deep knowledge of distribution centers, and ensures that we're focused on the issues that make a real difference to your business: Discovering new ways to achieve operational efficiency and productivity, while also driving down labor costs.

Honeywell research reveals that the average amount of unproductive time per 8-hour work shift has actually increased by 7 minutes since 2012, rising from 15 minutes to 22 minutes. And, with approximately 134 mispicks happening every week, the average company is losing over \$459k per year.

When it comes to quantifying the value that gaining back mere seconds on unproductive workflows presents to overall efficiency, a DC with a minimum of 50 workers is losing close to 3,000 hours a year in productivity.

Honeywell has made a big difference for supply chain leaders around the globe – enhancing safety and productivity for over 500 million workers annually. Our data capture and workflow solutions have shaved over 6 hours in dock-to-stock times, leading to over \$20 billion in savings for our customers.

### How Honeywell Is Helping the World's Leading DC Operations



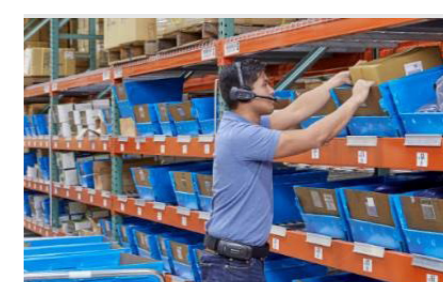
**500M+ workers yearly** are more productive and safer due to Honeywell solutions



**6 hours reduction** in dock-to-stock time from Honeywell solutions and workflow improvements



**99.99% improvement** in picking accuracy by moving from paper-based processes to Honeywell mobility and voice solutions



**+\$20B annually saved** in productivity and accuracy from Honeywell Voice Automated Solutions

### OUR SUCCESS IS BUILT UPON YOUR CONTINUED SATISFACTION

Taking a step back from your day-to-day operational activities is never easy. Honeywell can help. Our team can assist you in facility evaluation efforts that can find new opportunities to enhance your results. Honeywell Customer Satisfaction Program provides a consultative analysis for ongoing optimization of your operation. For continued success and increased satisfaction.

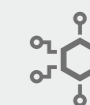
The **Customer Satisfaction Program (CSP)** has a few simple goals:



Help make our Honeywell users more successful.



Increase our focus on customer satisfaction.



Provide a structured program with ongoing management visibility and continuity.

The CSP provides a methodology and framework to maintain and improve user communications, increase customer relationships, help foster ongoing value through best practices optimization, provide workflow process improvements, and offer enhancements to existing technology deployments.

To find out how the **Customer Satisfaction Program** can improve your Honeywell solution and help identify efficiencies, contact your local Honeywell representative today.



# SOLUTIONS FOR THE NEXT GENERATION DC WORKER

Welcome to your Distribution Center – redefined. Only Honeywell gives you end to end technology solutions that easily connects your people, assets, and processes to drive greater productivity, agility, and efficiency throughout your supply chain and DC.



## Receiving

The receiving process is arguably the most important process in the DC: All downstream workflows depend on the accuracies and efficiencies achieved during receiving. Equip receiving workers with the right combination of software and products designed to receive products quickly and accurately; capture data instantaneously to catch errors upon receipt of inventory; and provide direction for the workflow in an automated manner.



## Putaway and Replenishment

A DC pallet's initial location influences all the processes that follow. Supply your put-away & replenishment team on the floor and forklift drivers with mobility equipment that enables them to minimize dock-to-stock cycle time, enhance productivity, and offer real time visibility to the team monitoring DC capacity and stock allocation.



## Picking

Picking is by far the most labor-intensive process in the DC and also the most error-prone – which makes it an ideal workflow for operational improvements. Arm your picker/selection employees with an industrial headset and a mobile computer loaded with the voice automated picking workflow. This hands-free/eyes-up combo has proved time over time to deliver improvement in pick-rates, efficiency and accuracy – which is imperative to a good customer experience. Asset management software provides confidence your devices are ready-for-use.



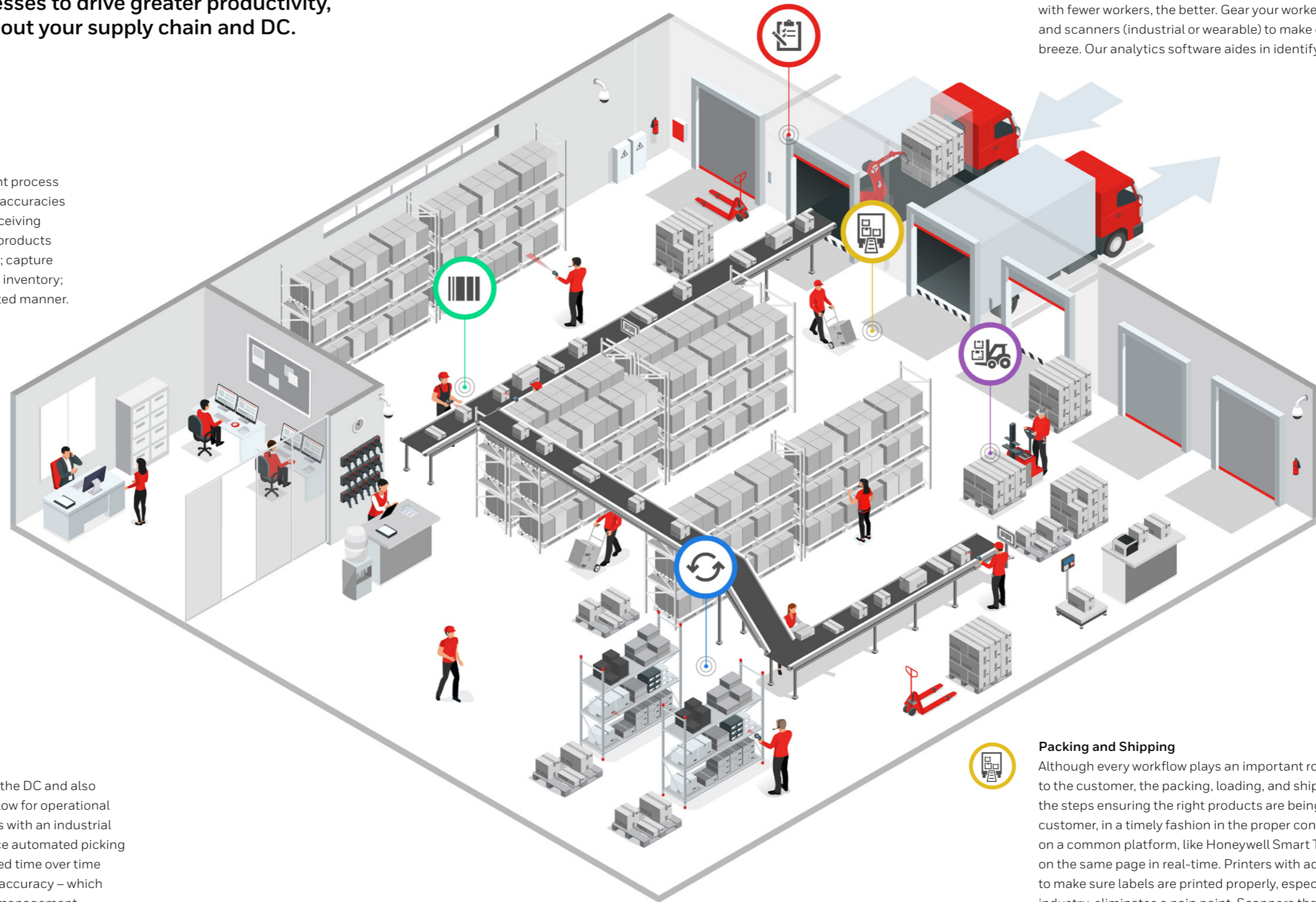
## Inventory Control

Inventory is the bloodline to your business. No matter what inventory or cycle counting method you use the easier it is to capture and track the information with fewer workers, the better. Gear your workers with mobile computers and scanners (industrial or wearable) to make capturing the information a breeze. Our analytics software aids in identifying process improvements.



## Packing and Shipping

Although every workflow plays an important role in getting the final product to the customer, the packing, loading, and shipping workers are tasked with the steps ensuring the right products are being delivered to the correct customer, in a timely fashion in the proper condition. Open communication on a common platform, like Honeywell Smart Talk™, enables everyone to be on the same page in real-time. Printers with advanced technology designed to make sure labels are printed properly, especially in highly regulated industry, eliminates a pain point. Scanners that are built with machine learning prevent wrong products leaving the dock because of faded SKUs.





# A BROAD PORTFOLIO OF SOLUTIONS DESIGNED FOR THE DC



Honeywell engineered a broad portfolio of workflow software and product solutions designed to automate critical DC processes. Our solutions are proven across thousands of customer deployments worldwide to increase worker productivity and reduce errors – with up to a 35% increase in worker productivity and over 99% improvements in task accuracy.

## HONEYWELL PRODUCT SOLUTIONS

### Scanning

From rugged warehouse environments to ultra-rugged manufacturing sites, you can trust our industrial-grade barcode scanners to provide superior durability, reliability and ergonomic benefits for your worker to get the job done. Honeywell portfolio ranges from rugged-handhelds to wearable scanners, equipped with FlexRange™ capabilities.

### Handheld and Vehicle-Mounted Computing

Built ultra-rugged for the DC environment, with industry leading drop and tumble specs and cold storage environment options. With full touch and keypad form factors and near/far range scanning based on your application and worker needs. Honeywell portfolio ranges from rugged-handhelds to wearable scanners.

### Fixed and Mobile Printing and Media

Recognized for durability and reliability, our industrial and mobile label printers offer minimized errors in labeling, easy programmability, advanced networking connectivity and security, and RFID and liner-less technology. Ideal for applications, from commercial light-volume needs to rugged, around-the-clock printing performance.

### RFID

Ideal for applications such as inventory cycle counts, omni-channel order fulfillment, receiving new product, and pick lists – lightweight yet rugged for tough DC environments. Honeywell portfolio ranges from rugged-handhelds to wearable scanners.

## MOBILITY EDGE™

### Develop Once. Certify Once. Manage Uniformly

The Mobility Edge™ platform helps customers who invest in complex mobility solutions and need a stable, durable platform.



Accelerate Deployments



Optimize Business Performance



Extend Lifecycle



Strengthen Security

## HONEYWELL TECHNOLOGY SOLUTIONS

### Voice Automated Solutions

Voice automated solutions are innovative workflow performance technologies designed for the warehouse and DC. Voice automation enables employees to work at peak performance with the elimination of distractions and unnecessary steps – which is crucial when employees are incentivized and compensated on performance metrics like pick rate and accuracy.

With the inherent voice-driven nature of the solution, training and onboarding times are reduced for cross-training, new hires and temporary employees. It also supports incentive programs and expands the pool of potential workers, with multilingual capabilities that cover more than 50 different languages and dialects.



#### Increased Productivity

Up to 35% improvement from legacy systems, allowing workers' hands to always be free to pick products and complete tasks.



#### Improved Accuracy

With eyes always focused on the job, quickly find products in the correct location and reduce errors up to 50%



#### Works Across Distribution Center Functions

Automated picking, receiving, put-away, cycle counting, and more results in easy worker training across functions.

### Asset Intelligence

Master the tracking, management, standardization and optimization of your mobile devices. Asset Intelligence provides an intuitive user interface to your IT assets' performance metrics and delivers actionable insights that bridge the gap commonly missed by Asset Management or Mobile Device Management solutions. Asset Intelligence in distribution centers has demonstrated benefits of improved worker productivity, real-time asset diagnostics, and locating lost devices.



Battery Notification



Proximity Detection



Remote Control and Device System Wipe



Device Check-Out/Check-In



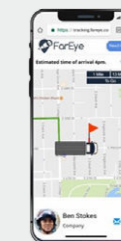
### Managed Services and Break-Fix Repair

Device deployment, depot, and helpdesk support, along with mobile device management (MDM) administration.

### FarEye - Advanced Last Mile Execution Platform

Honeywell's partnership with FarEye provides a single delivery management solution powered by Honeywell mobile computers and a predictive logistics SaaS platform. We empower businesses to manage, track, and monitor delivery operations anytime, anywhere, with real-time visibility across the supply chain to:

- Optimize the movement of goods from first mile to last mile
- Improve operations performance in real-time and
- Deliver a delightful customer experience



### **About Peak Technologies**

Peak Technologies delivers end-to-end enterprise mobility, managed services, printing and mobile data capture solutions for performance-driven organizations focused on the optimization of supply chain and field-based business processes. Peak Technologies' in-depth industry-specific experience, state-of-the-art solutions and managed services, and exemplary customer support provide transformational business solutions and results that deliver greater ROI and outstanding value. Peak Technologies serves as a trusted business partner for some of the world's largest companies, while also supporting local and regional customers with an extensive coverage footprint throughout North America and Europe.

### **Peak Technologies**

901 Elkridge Landing Rd  
Suite 300  
Linthicum Heights, MD 21090  
888.492.6346  
[www.peaktech.com](http://www.peaktech.com)

Solutions Designed for the Evolving  
Distribution Center Brochure | Rev E | 01/24  
© 2024 Honeywell International Inc.

**Honeywell**

---

